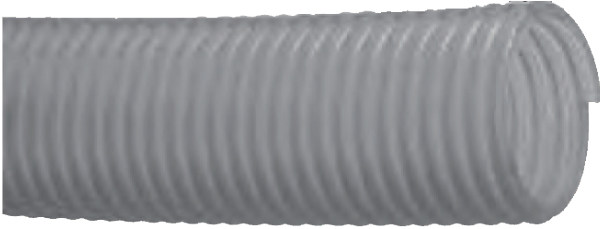


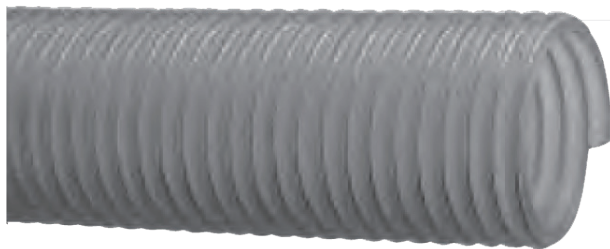
# Hose Types/Properties

## PVC Hose



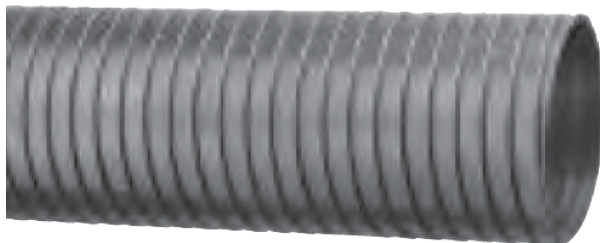
- Clear, food grade, PVC, material-handling hose
- Smooth bore for better product movement
- Suction and discharge of pellets and powders
- Moderate abrasion resistance
- Temperature range -20°C to +65°C (-4°F to +150°F)
- 1.5" ID to 6" ID in full rolls or cut to length in 20 ft. increments

## PVC Static Hose



- Clear, food-grade, PVC hose with internal static wire
- Smooth bore for better product movement
- Suction and discharge of pellets and powders
- Moderate abrasion resistance
- Temperature range -20°C to +65°C (-4°F to +150°F)
- 1.5" ID to 6" ID in full rolls or cut to length in 20 ft. increments

## Stainless & Galvanized Steel Hose



- Strip-wound and interlocked metal hose ideal for pneumatic and dry-bulk conveying
- Available with a smooth, abrasion-resistant metal liner for better product movement
- Directional flow for optimum performance
- Various end Fittings such as Flanges, Stub Ends and Camlocks
- 1.5" ID to 6" ID from 10' to 60' lengths

Consult factory for other types of hose not listed